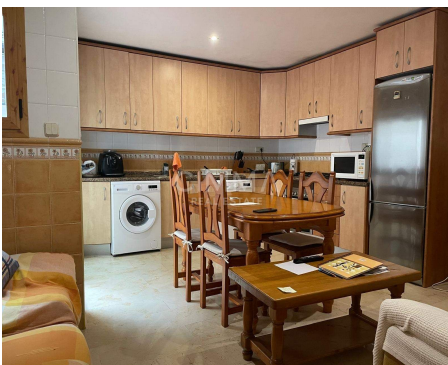


**307.000€** Adosado - En venta

## Splendid house in La Nucía village: Your ideal refuge

ALICANTE » La Nucía » La Nucia Pueblo

**4** Dormitorios  
**2** Baños  
**208m<sup>2</sup>** Útiles  
**210m<sup>2</sup>** Construidos



**Contáctenos sobre esta propiedad**

+34 965 992 318 • [info@cimmarealestate.com](mailto:info@cimmarealestate.com) • [cimmarealestate.com](http://cimmarealestate.com)  
Av/ Coloma nº1 Cc.Plaza del Sol, Loc nº1-2 La Nucia 03530 (Alicante)

## CARACTERÍSTICAS

**Estado:** Entrar a vivir

**Habitaciones dobles:** 4

**Aseos:** 2

**Plazas de parking:** 3

**Nº plaza de parking:** 3

**Garaje:** Garaje incluido

**Planta:** 3

**Carpintería interior:** Pino

**Carpintería exterior:** Aluminio-Madera

**I.B.I:** 812€

## DESCRIPCIÓN

### Splendid house in La Nucía village: Your ideal refuge

Discover this wonderful property located in the charming area of La Nucía Pueblo, a place where comfort and style merge. With a generous surface area of 208 m<sup>2</sup>, you will have at your disposal four spacious double bedrooms ideal for resting or entertaining guests. This house features two perfectly distributed toilets that bring functionality to daily life.

Upon entering, you will be welcomed by elegant marble floors that add a sophisticated touch to every corner of the home. Its equipped kitchen will allow you to unleash your culinary skills while enjoying the bright and cozy space.

The interior carpentry is made of natural pine, providing warmth and invitation; the exterior windows combine aluminum-wood ensuring durability and aesthetic beauty. Additionally, you will enjoy extras such as running water, a private balcony perfect for relaxing outdoors after a long day, and a fireplace ideal for creating unique moments with your loved ones during cold winter nights.

The double garage is a must, making it easy to park your vehicles without additional worries. Additionally, you will have distinctive architectural elements that allow abundant natural light to enter, creating pleasant spaces within the home; your new armored door adds necessary security, giving you constant peace of mind when you are away.

Strategically located near buses, fresh trees, recreational parks, a complete shopping area, as well as schools and medical centers, it also makes it not only a refuge but a strategic point accessible to all possible services.

All this, combined with a picturesque mountainous environment, guarantees exceptional quality of life, constantly sending you memorable memories enjoyed here! Come and see it today!



Amueblado, Árboles, Balcón, Cerca de colegios, Chimenea, Cocina independiente, Electrodomésticos, Ojos buey, Puerta blindada, Terraza, Todo exterior, Trastero, Autobuses, Zona de costa, Zonas infantiles, Centros comerciales, Zona de montaña, Garaje Doble, Vistas al Mar,

## Contáctenos sobre esta propiedad

+34 965 992 318 • info@cimmarealestate.com • cimmarealestate.com  
Av/ Coloma nº1 Cc.Plaza del Sol, Loc nº1-2 La Nucia 03530 (Alicante)

**CERTIFICADO ENERGÉTICO**

**CONSUMO DE ENERGÍA PRIMARIA NO RENOVABLE**  
[kWh/m<sup>2</sup> año]

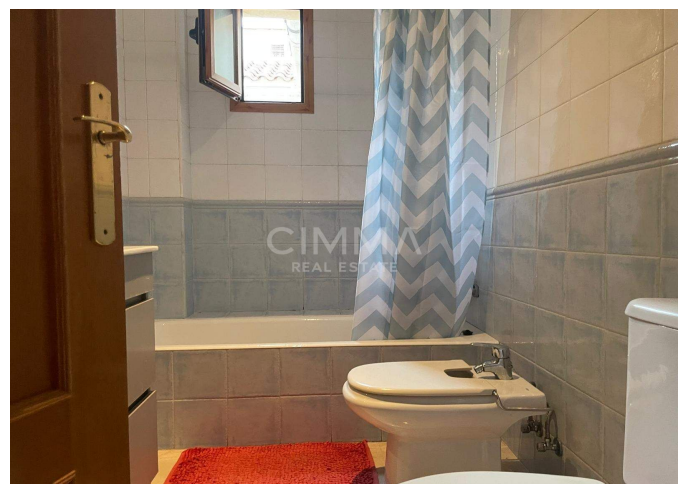
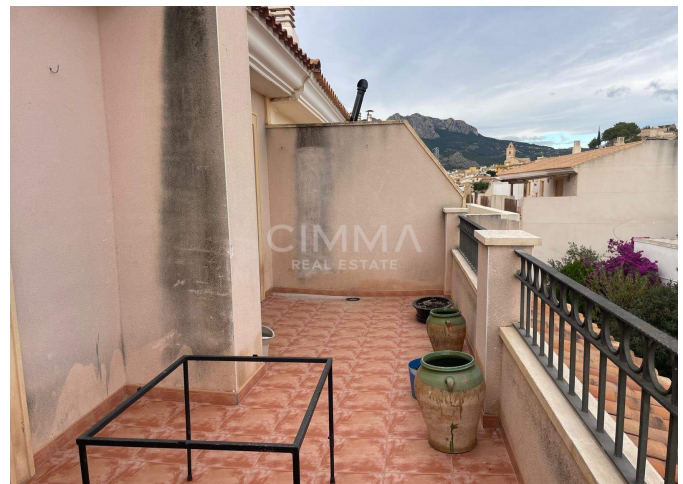
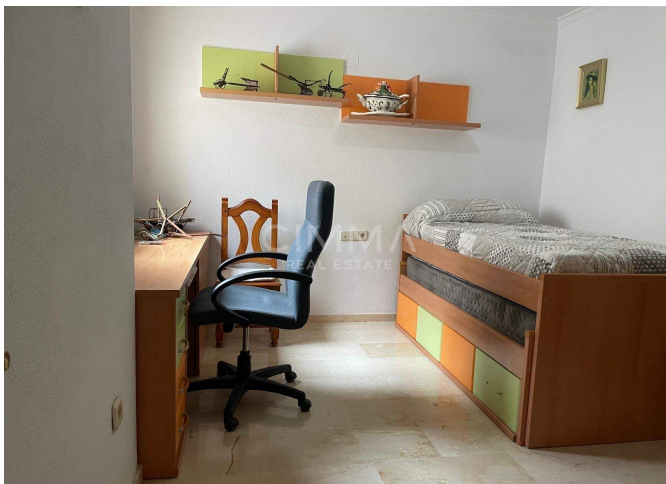


EN TRÁMITES

**EMISIONES DE DÍOXIDO DE CARBONO**  
[kgCO<sub>2</sub>/m<sup>2</sup> año]



EN TRÁMITES



Información importante referente a las propiedades ofrecidas por Cimma Real Estate. Los datos de cada inmueble no son parte de una oferta o de un contrato. No deben considerarse exactas o factuales las declaraciones hechas por Cimma Real Estate, verbalmente o por escrito, con respecto al inmueble, el estado en que se encuentra o su valor. Ni Cimma Real Estate ni ningún otro agente asociado tiene ninguna autoridad para hacer declaraciones sobre el inmueble y, en consecuencia, toda información está libre de responsabilidad por parte de los agentes, vendedor(es) arrendador(es).

**Contáctenos sobre esta propiedad**

+34 965 992 318 • [info@cimmarealestate.com](mailto:info@cimmarealestate.com) • [cimmarealestate.com](http://cimmarealestate.com)  
Av/ Coloma nº1 Cc.Plaza del Sol, Loc nº1-2 La Nucia 03530 (Alicante)