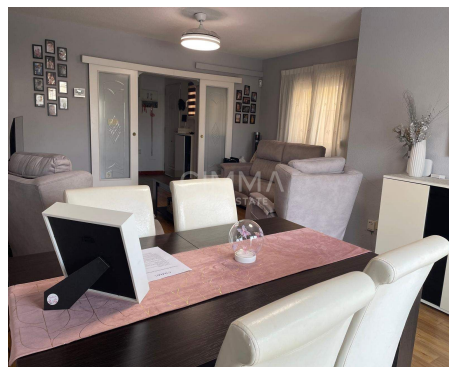
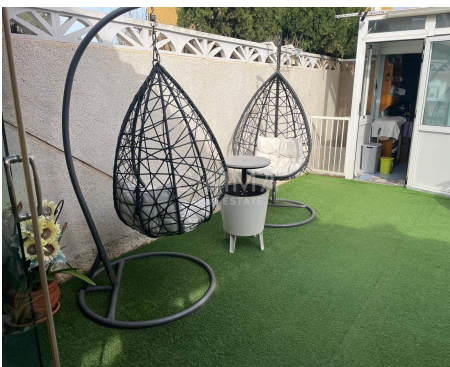


378.000€ Bungalow - En venta

Semi-Detached Bungalow Ready to Move in La Nucía

ALICANTE » La Nucía » Varadero

4 Dormitorios
3 Baños
139m² Útiles
151m² Construidos



Contáctenos sobre esta propiedad

+34 965 992 318 • info@cimmarealestate.com • cimmarealestate.com
Av/ Coloma nº1 Cc.Plaza del Sol, Loc nº1-2 La Nucia 03530 (Alicante)

CARACTERÍSTICAS

Estado: Entrar a vivir

Habitaciones dobles: 4

Baños: 3

Año: 1999

Plazas de parking: 2

Nº plaza de parking: 2

Garaje: Garaje incluido

Carpintería interior: Madera

Carpintería exterior: Aluminio

I.B.I: 586€

DESCRIPCIÓN

Semi-Detached Bungalow Ready to Move in La Nucía

Semi-detached bungalow ready to move in La Nucía, a property that stands out for its functionality, spaciousness, and excellent distribution, ideal both as a permanent residence and for enjoying long stays in a quiet and well-connected environment.

The house is organized over several carefully utilized floors. On the main floor, we find a cozy living-dining room, a fully equipped kitchen with everything necessary, a full bathroom, and a bedroom, which provides great convenience for day-to-day living or for receiving visits without needing to access other floors.

On the upper floor, there are two bright additional bedrooms alongside a full bathroom, offering an intimate and comfortable space for rest. In addition, the property features built-in wardrobes that optimize storage and provide order and practicality.

The basement has been set up as an independent area that significantly expands the possibilities of the house, with a large additional living room and a double bedroom, creating a versatile space that can be used as an independent apartment, guest area, or family leisure area.

Outside, the house has a meticulously maintained private garden, which integrates a barbecue area perfect for enjoying outdoor gatherings. It also has a private pool, alongside a communal pool, offering multiple options for enjoyment throughout the year. The terrace, along with a glazed terrace, allows you to make the most of natural light and the local climate in any season.

The property also includes parking space for two vehicles and has adaptations for people with reduced mobility, including adapted access via stairs, making it an accessible and functional option for all types of families.



Armarios empotrados, Barbacoa, Calefacción central, Cerca de colegios, Electrodomésticos, Galería, Jardín, Patio, Pérgola, Piscina comunitaria, Piscina privada, Televisión, Terraza, Terraza acristalada, Todo exterior, Trastero, Autobuses, Zonas infantiles, Centros comerciales, Despensa,

Contáctenos sobre esta propiedad

+34 965 992 318 • info@cimmarealestate.com • cimmarealestate.com
Av/ Coloma nº1 Cc.Plaza del Sol, Loc nº1-2 La Nucía 03530 (Alicante)

Located in a quiet thoroughfare area, close to essential services such as hospitals and children's areas, this house meets all the conditions to become the ideal home.

A unique opportunity for those seeking quality of life, space, and comfort in a privileged environment. We invite you to visit and discover all its potential.

Contáctenos sobre esta propiedad

+34 965 992 318 • info@cimmarealestate.com • cimmarealestate.com
Av/ Coloma nº1 Cc.Plaza del Sol, Loc nº1-2 La Nucia 03530 (Alicante)

CERTIFICADO ENERGÉTICO

CONSUMO DE ENERGÍA PRIMARIA NO RENOVABLE
[kWh/m² año]

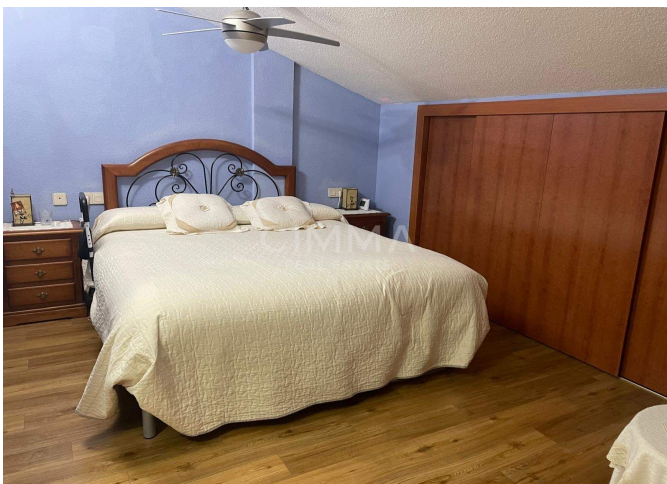


EN TRÁMITES

EMISIONES DE DIÓXIDO DE CARBONO
[kgCO₂/m² año]



1234.99



Información importante referente a las propiedades ofrecidas por Cimma Real Estate. Los datos de cada inmueble no son parte de una oferta o de un contrato. No deben considerarse exactas o factuales las declaraciones hechas por Cimma Real Estate, verbalmente o por escrito, con respecto al inmueble, el estado en que se encuentra o su valor. Ni Cimma Real Estate ni ningún otro agente asociado tiene ninguna autoridad para hacer declaraciones sobre el inmueble y, en consecuencia, toda información está libre de responsabilidad por parte de los agentes, vendedor(es) arrendador(es).

Contáctenos sobre esta propiedad

+34 965 992 318 • info@cimmarealestate.com • cimmarealestate.com
Av/ Coloma nº1 Cc.Plaza del Sol, Loc nº1-2 La Nucia 03530 (Alicante)