

310.000€ Adosado - En venta

Independent chalet with large plot in La Nucía

ALICANTE » La Nucía » La nucia

3	2	129m²	140m²
Dormitorios	Baños	Útiles	Construidos



Contáctenos sobre esta propiedad

+34 965 992 318 • info@cimmarealestate.com • cimmarealestate.com
Av/ Coloma nº1 Cc.Plaza del Sol, Loc nº1-2 La Nucia 03530 (Alicante)

CARACTERÍSTICAS

Estado: Entrar a vivir
Habitaciones dobles: 3
Baños: 2

DESCRIPCIÓN

Independent chalet with large plot in La Nucía

Independent chalet with a large plot, spacious terraces, and unique spaces designed to enjoy tranquility, privacy, and comfort in a privileged residential environment. A home with its own personality, ideal both as a permanent residence and a high-value investment.

The property is distributed into 3 bedrooms and 2 full bathrooms, offering a comfortable, functional, and very bright layout. Its main rooms stand out for their spaciousness, excellent natural light entry, and a cozy atmosphere throughout the year.

The house features a private plot of generous dimensions, perfect for enjoying the outdoors, creating garden areas, installing a pool, chill-out areas, or leisure spaces for the whole family. Additionally, it has spacious terraces, ideal for outdoor breakfasts, gatherings with friends, or simply relaxing while enjoying the Mediterranean climate.

One of the great added values of this house is its basement fitted as a fully soundproof music studio, an exclusive and hard-to-find space, perfect for musicians, content creators, remote work, private gym, cinema room, or multifunctional area.

The house combines privacy, interior spaciousness, and excellent outdoor possibilities, making it a very attractive opportunity for those looking for something different with great potential.

A property with special characteristics, ready to move in and enjoy from day one.



Contáctenos sobre esta propiedad

+34 965 992 318 • info@cimmarealestate.com • cimmarealestate.com
Av/ Coloma nº1 Cc.Plaza del Sol, Loc nº1-2 La Nucia 03530 (Alicante)

CERTIFICADO ENERGÉTICO

CONSUMO DE ENERGÍA PRIMARIA NO RENOVABLE
[kWh/m² año]

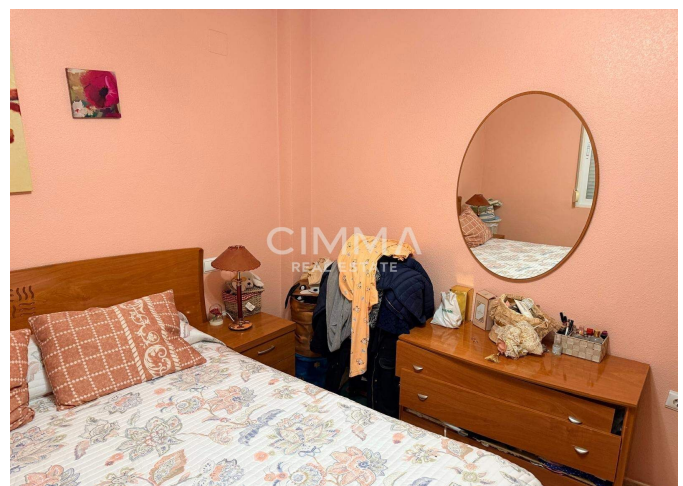
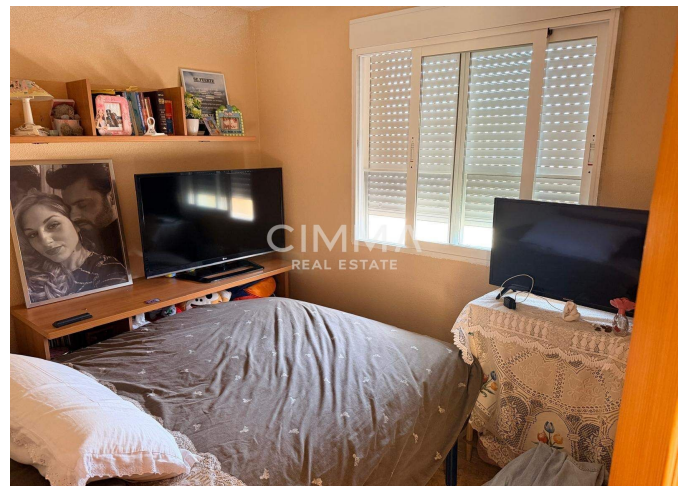


EN TRÁMITES

EMISIONES DE DÍOXIDO DE CARBONO
[kgCO₂/m² año]



1234.99



Información importante referente a las propiedades ofrecidas por Cimma Real Estate. Los datos de cada inmueble no son parte de una oferta o de un contrato. No deben considerarse exactas o factuales las declaraciones hechas por Cimma Real Estate, verbalmente o por escrito, con respecto al inmueble, el estado en que se encuentra o su valor. Ni Cimma Real Estate ni ningún otro agente asociado tiene ninguna autoridad para hacer declaraciones sobre el inmueble y, en consecuencia, toda información está libre de responsabilidad por parte de los agentes, vendedor(es) arrendador(es).

Contáctenos sobre esta propiedad

+34 965 992 318 • info@cimmarealestate.com • cimmarealestate.com
Av/ Coloma nº1 Cc.Plaza del Sol, Loc nº1-2 La Nucia 03530 (Alicante)